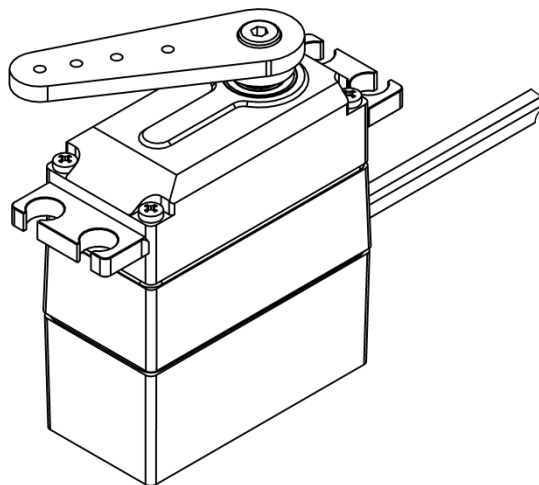


DA 20

Technical Specification



DA 20-06-2505
DA 20-12-2515
DA 20-30-2530

Content

1.	General Description.....	3
2.	Operating Data	4
2.1.	Operating Data 6V-Versions	4
2.2.	Operating Data 12V-Version.....	5
2.3.	Operating Data 28V-Versions	6
3.	Performance	7
3.1.	Performance 6V-Version	7
3.2.	Performance 12V-Version	8
3.3.	Performance 28V-Version	9
4.	PWM Command Signal	10
4.1.	Position Feedback Signal	10
5.	Materials and Protective Features	11
6.	Dimensions	11
6.1.	Installation Dimensions	12
6.2.	Output Shaft Spline	13
7.	Electrical Connection Options	14
8.	Accessories	15
8.1.	Aluminum Servo Arm, double sided.....	16
8.2.	Aluminum Servo Arm, single sided.....	17
9.	Item Number System.....	18

1. General Description

The housings of our DA 20 series are made of CNC-machined aluminum elements with a bottom case part made of fibreglass-reinforced plastic. The aluminum parts are rugged, torsion-resistant and dissipate internal heat. As with all our actuators, the DA 20 also has a steel gear train and is fully programmable using our programming tool (available as accessory).

2. Operating Data

2.1. Operating Data 6V-Versions

		DA 20-06-2505...
Supply Voltage (rated)		6 V DC
Supply Voltage Range		5 ... 8 V DC
Standby Current ¹	at rated voltage	< 0.01 A
Rated Current ¹	at rated voltage	0.6 A
Peak Current ¹	at rated voltage	2.3 A
Rated Torque ¹	at rated speed	30 Ncm (42 ozf-in)
Peak Torque ¹	at rated voltage	150 Ncm (212 ozf-in)
No Load Speed ¹	at rated voltage	320 °/s
Rated Speed ¹	at rated torque	280 °/s
Default Travel Angle		±45° = 90° total travel
Max. Standard Travel Angle ²		±85° = 170° total travel
Extended Travel Angle (optional)		±165° = 330° total travel
Backlash (mechanical)		≤ 0.5°
Position Error under Temperature ³		≤ ±1.0°
Operating Temperature Range		-30°C ... +70°C (-22°F ... +158°F)
Storage Temperature Range		-35°C ... +80°C (-31°F ... +176°F)

1) Tolerance ±10%

2) Programming Tool # 985.1 required

3) -20°C ... +50°C , Δt = 70°C (-4°F ... +122°F , Δt = 126°F)

2.2. Operating Data 12V-Version

		DA 20-12-2515...
Supply Voltage (rated)		12 V DC
Supply Voltage Range		10 ... 16 V DC
Standby Current ¹	at rated voltage	< 0.01 A
Rated Current ¹	at rated voltage	0.45 A
Peak Current ¹	at rated voltage	0.8 A
Rated Torque ¹	at rated speed	80 Ncm (113 ozf-in)
Peak Torque ¹	at rated voltage	160 Ncm (227 ozf-in)
No Load Speed ¹	at rated voltage	210 °/s
Rated Speed ¹	at rated torque	130 °/s
Default Travel Angle		±45° = 90° total travel
Max. Standard Travel Angle ²		±85° = 170° total travel
Extended Travel Angle (optional)		±165° = 330° total travel
Backlash (mechanical)		≤ 0.5°
Position Error under Temperature ³		≤ ±1.0°
Operating Temperature Range		-30°C ... +70°C (-22°F ... +158°F)
Storage Temperature Range		-35°C ... +80°C (-31°F ... +176°F)

1) Tolerance ±10%

2) Programming Tool # 985.1 required

3) -20°C ... +50°C , Δt = 70°C (-4°F ... +122°F , Δt = 126°F)

2.3. Operating Data 28V-Versions

		DA 20-30-2530...
Supply Voltage (rated)		28 V DC
Supply Voltage Range		20 ... 30 V DC
Standby Current ¹	at rated voltage	< 0.01 A
Rated Current ¹	at rated voltage	0.2 A
Peak Current ¹	at rated voltage	0.3 A
Rated Torque ¹	at rated speed	70 Ncm (99 ozf-in)
Peak Torque ¹	at rated voltage	150 Ncm (212 ozf-in)
No Load Speed ¹	at rated voltage	240 °/s
Rated Speed ¹	at rated torque	160 °/s
Default Travel Angle		±45° = 90° total travel
Max. Standard Travel Angle ²		±85° = 170° total travel
Extended Travel Angle (optional)		±165° = 330° total travel
Backlash (mechanical)		≤ 0.5°
Position Error under Temperature ³		≤ ±1.0°
Operating Temperature Range		-30°C ... +70°C (-22°F ... +158°F)
Storage Temperature Range		-35°C ... +80°C (-31°F ... +176°F)

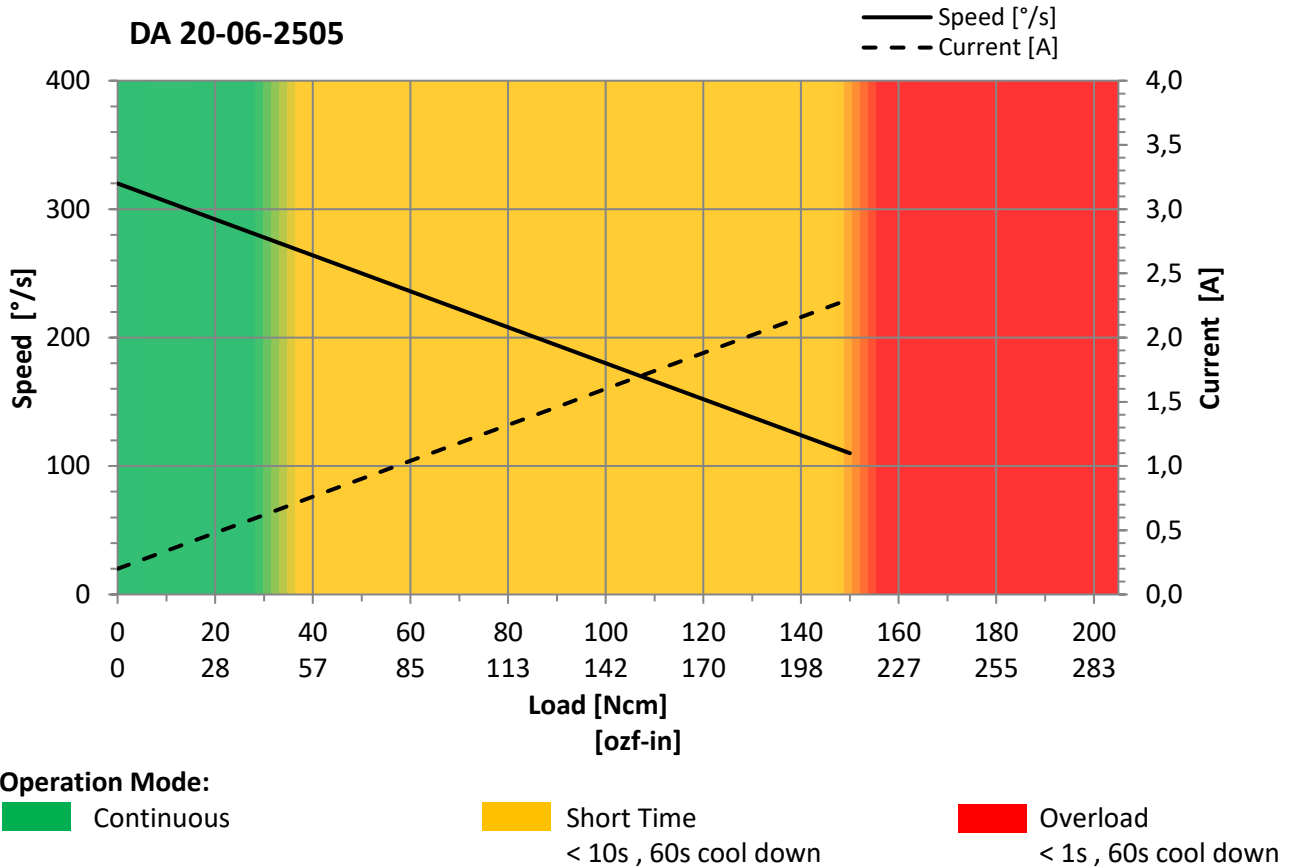
1) Tolerance ±10%

2) Programming Tool # 985.1 required

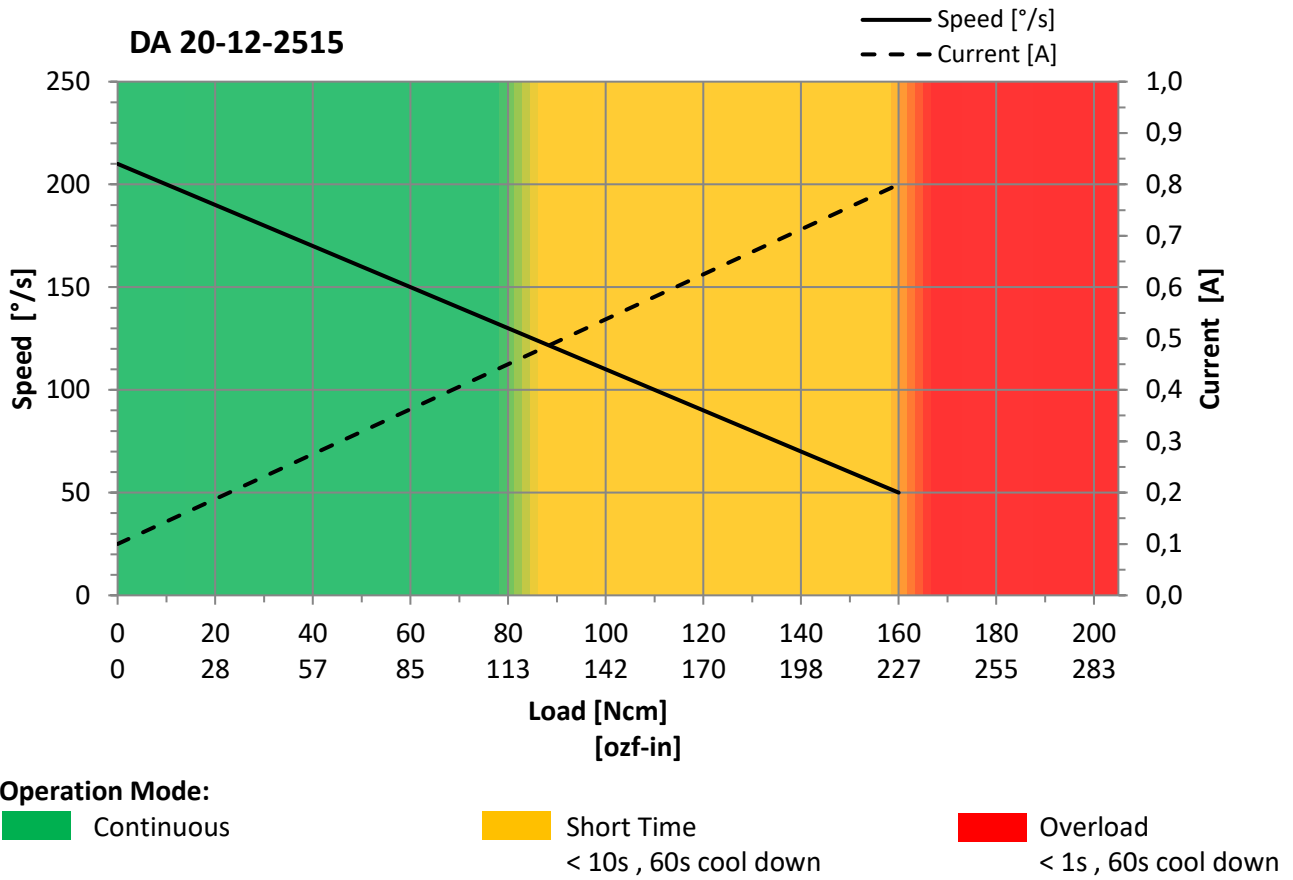
3) -20°C ... +50°C , Δt = 70°C (-4°F ... +122°F , Δt = 126°F)

3. Performance

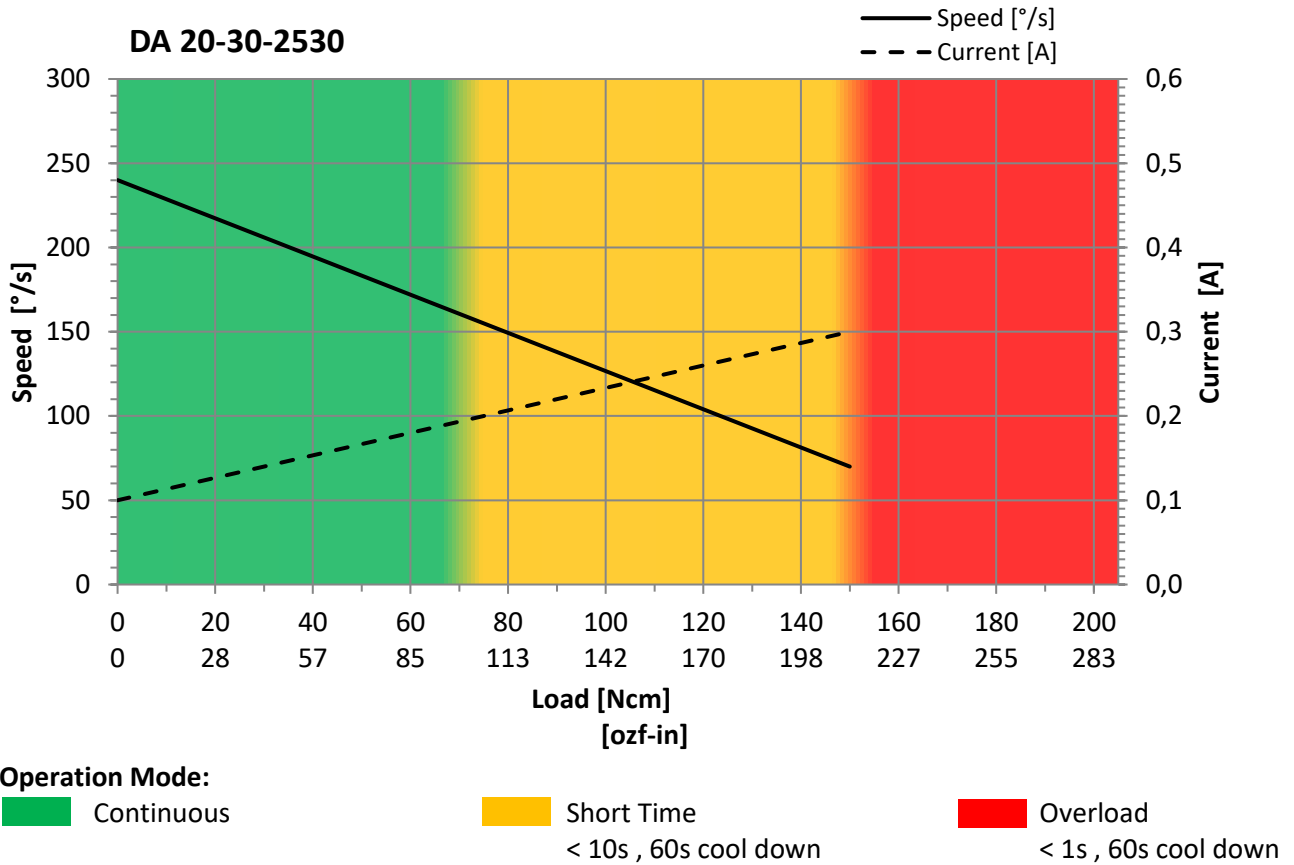
3.1. Performance 6V-Version



3.2. Performance 12V-Version



3.3. Performance 28V-Version

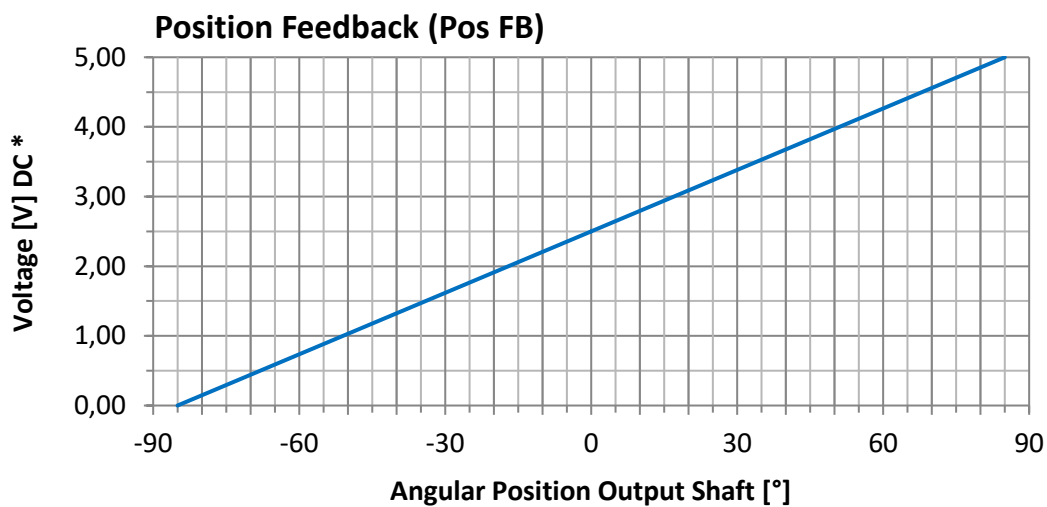
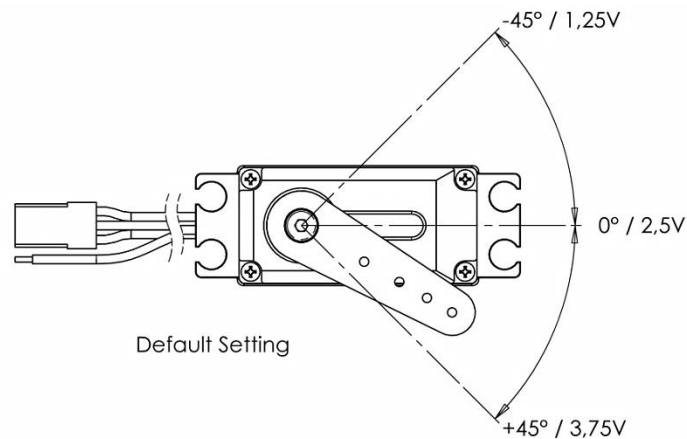


4. PWM Command Signal

Signal Voltage	TTL-Level HIGH: min. 2.2V , max. 5.0V TTL-Level LOW: min. 0.0V , max. 0.8V
Frame Rate	7 ... 20 ms
Valid Pulse Lengths	0.8 ... 2.2 ms
Pulse Lengths for Position Left / Center / Right	1.0 / 1.5 / 2.0 ms
Resolution	$\leq 1.0 \mu\text{s}$

4.1. Position Feedback Signal

The Position Feedback signal (Pos FB) is an analog output signal with a voltage value which is directly related to the output shaft's angular position. Reference is Supply Ground (GND).



* Tolerance $\pm 5\%$

Content is subject to change without notice

5. Materials and Protective Features

Valid for all Versions

Case Material	Aluminum, Plastic Base
Splash Water Resistance	IP 51
Case Surface Treatment	Not available
Salt Water Resistance	Not available
EMI / RFI Shielding	Not available
Motor Type	Brushed DC Motor
Gear Set Material	Hardened Steel
Position Sensor	Precision Potentiometer
ISS Gear Protection System	Optional
Position Feedback	Optional
Extended Travel Angle	Optional

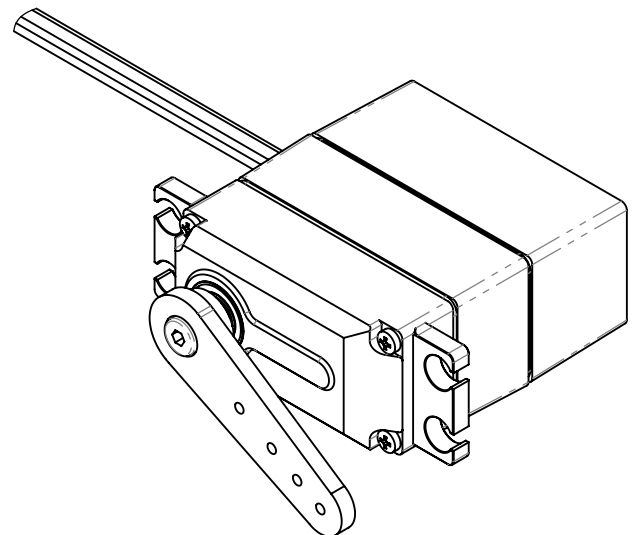
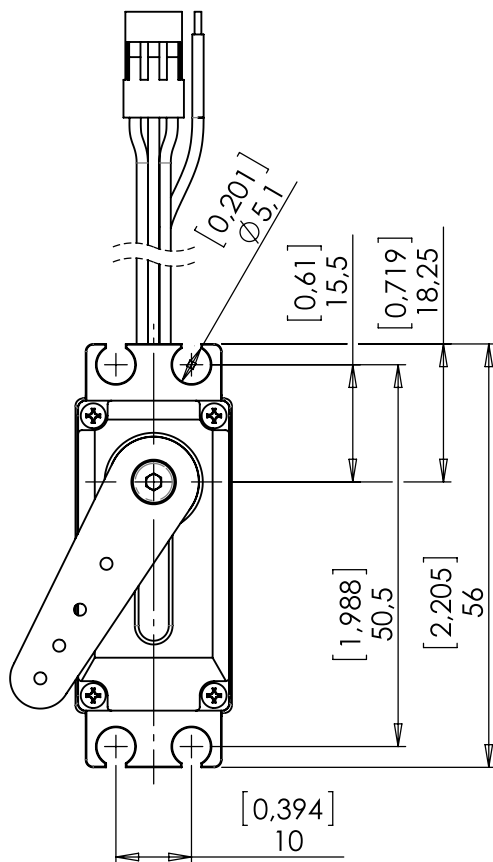
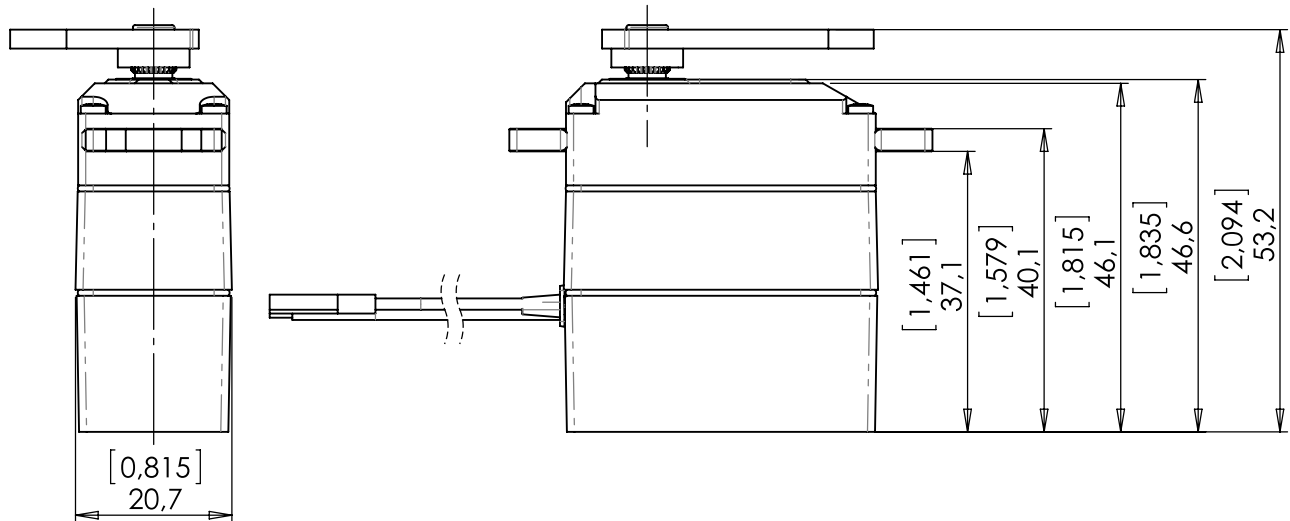
6. Dimensions

Case Dimensions	41.6 mm x 46.1 mm x 20.7 mm (1.638 in x 1.815 in x 0.815 in)
Weight	88g (3.1 oz) $\pm 10\%$

Standard Tolerances	Unless otherwise specified according to DIN ISO 2768 - m
---------------------	---

6.1. Installation Dimensions

Valid for all Versions

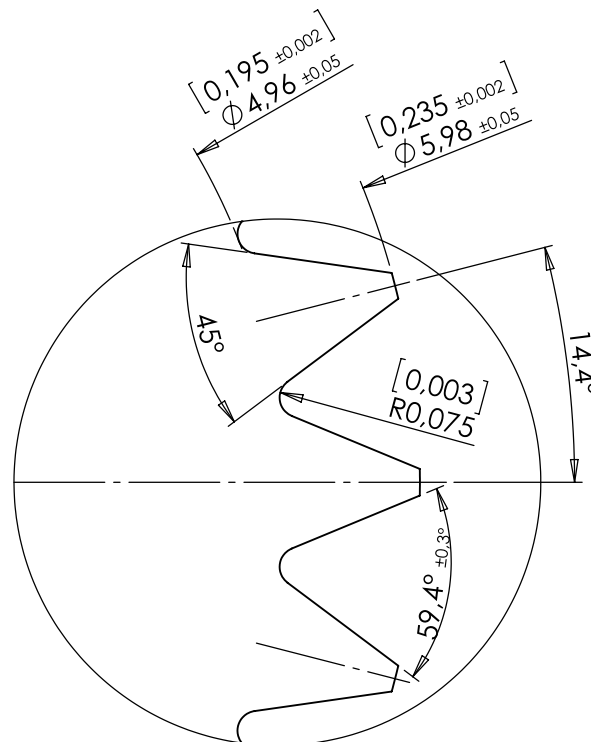
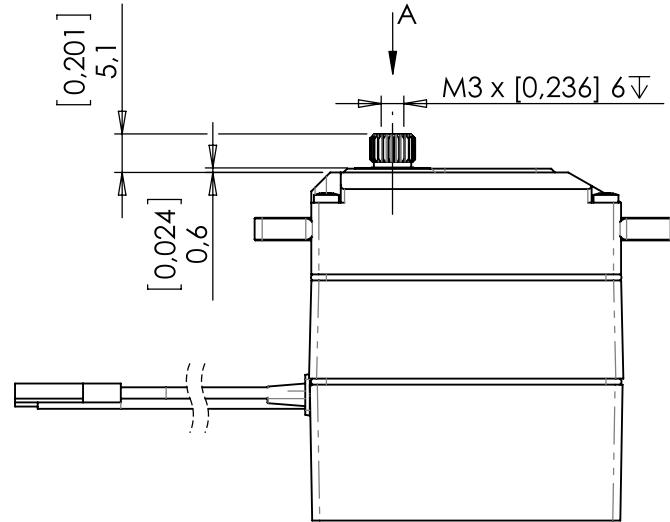


Not to scale

Dimensions [in] , mm

Content is subject to change without notice

6.2. Output Shaft Spline



View "A"

Not to scale

Dimensions [in] , mm

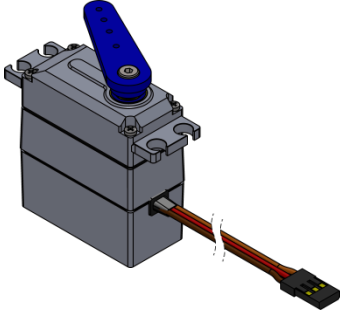
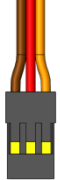
Content is subject to change without notice

7. Electrical Connection Options

Standard Connector

Leads Length 240mm (9.4in)

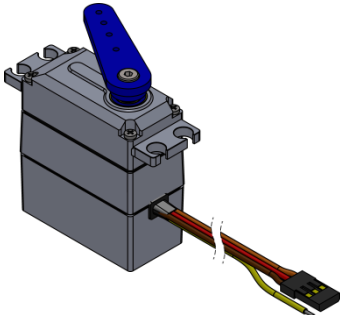
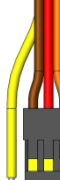
Item # DA 20._._.25_._.X._

	 3 2 1	Standard Connector	
		Manufacturer	
		Type	similar to FCI Mini-PV 65039-034LF
		Mating	Standard PCB-Header 2.54mm (0.1in) Pitch
	Pin Assignment		
1	Orange	SIG	Command Signal
2	Red	+V DC	Supply Voltage
3	Brown	GND	Supply Ground , Signal Ground

Standard Connector

Leads Length 240mm (9.4in)

Item # DA 20._._.25_._.P._

	 4 3 2 1	Standard Connector	
		Manufacturer	
		Type	similar to FCI Mini-PV 65039-034LF
		Mating	Standard PCB-Header 2.54mm (0.1in) Pitch
	Pin Assignment		
1	Orange	SIG	Command Signal
2	Red	+V DC	Supply Voltage
3	Brown	GND	Supply Ground , Signal Ground
4	Yellow	Pos FB	Position Feedback

8. Accessories

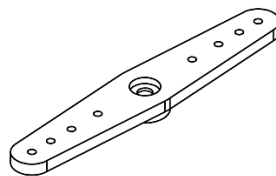
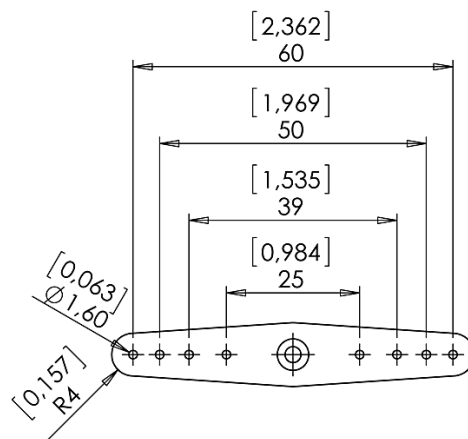
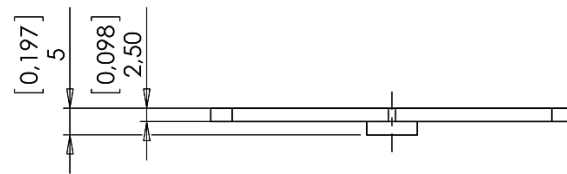
Item	Item-No.
Aluminum Servo Arm (double sided)	1641.20
Aluminum Servo Arm (single sided)	1641.21
Programming Tool DA 20	985.1

All accessories to be purchased separately.

8.1. Aluminum Servo Arm, double sided

1641.20

Valid for all Versions



Not to scale

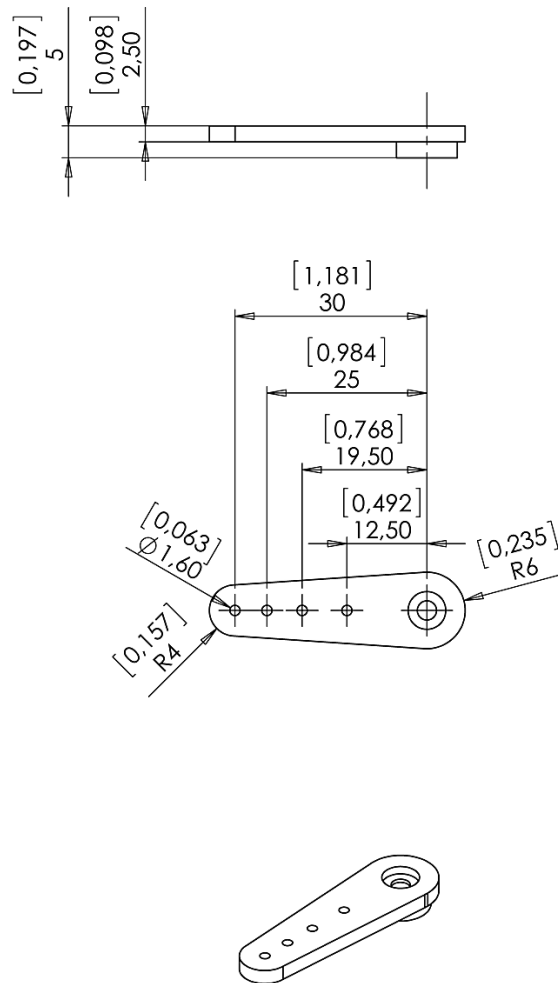
Dimensions [in] , mm

Content is subject to change without notice

8.2. Aluminum Servo Arm, single sided

1641.21

Valid for all Versions



Not to scale

Dimensions [in] , mm

[Content is subject to change without notice](#)

9. Item Number System

DA	20	.	06	.	25	03	.	I	.	P	.	E
Servo Class		20mm Class								Extended Travel Angle		
										E integrated X without		
										Position Feedback		
										P integrated X without		
										ISS Gear Protection System		
						Servo Type				I integrated X without		
						6 V 2505						
						12 V 2515						
						30 V 2530						



Volz Servos GmbH & Co. KG

Heinrich-Krumm-Straße 5
63073 Offenbach Germany
Germany
Tel. +49-69-985580-0
Fax +49-69-985580-40

e-Mail mail@volz-servos.com
Website www.volz-servos.com